

THE UK'S
BEST
PROPERTIES
REVEALED!

25 BEAUTIFUL HOMES

NOVEMBER
2025

SEE INSIDE MORE REAL HOMES THAN ANY OTHER MAGAZINE

Inspiring homes you'll love

IDEAS, ADVICE AND SOLUTIONS FOR
ALL YOUR INTERIOR RENOVATIONS

IN THIS ISSUE

- STUNNING KITCHENS
- VERSATILE LIVING SPACES
- COLOURFUL BEDROOMS
- SLEEK BATHROOMS

Find your signature style

BRING WARMTH AND CHARACTER TO EVERY ROOM OF THE HOUSE

Georgian
townhouse

Converted
pub

Detached
new build

Victorian
villa

Period
cottage



no. 11

The cosiness of timber is combined with a soft industrial feel for a modern kitchen (p74)



no. 12

This period terrace was re-envisioned with a classic aesthetic to make it feel lived in (p78)



no. 13

Colour, warmth and a Californian vibe flow through this new build (p88)



no. 14

Mid-century style brings a contemporary edge to a London Victorian villa (p94)



no. 15

Sweeping marble and large glazing create dramatic features in this new kitchen (p102)



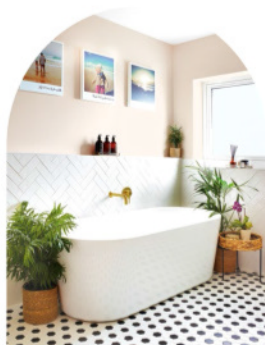
no. 16

These homeowners swapped their large period home for a stylish flat (p106)



no. 17

Joyful colour and playful patterns have transformed a barn conversion (p112)



no. 18

Knocking two rooms into one has created a large and luxurious bathroom space (p116)



no. 19

An eclectic mix of new and old with original art has enlivened this country home (p118)



no. 20

A downsizing decision led this couple to the perfect city centre bolthole (p125)



no. 21

A harmonious scheme of soft colours and textured fabrics form a welcoming home (p130)



no. 22

Chic rustic style makes this loft bedroom feel super cosy (p136)



no. 23

A characterful home where whimsical details are paired with traditional pieces (p138)



no. 24

Simple luxuries enhance the cosy feel in this Cornish holiday retreat (p144)



no. 25

These buyers indulged their love of period style when they took on this renovation (p150)



Shopping Beautiful buys to steal the style of a few of our houses (p18, p86 and p158)
Design solutions Three inspiring ideas from this issue to try in your own home (p162)

LASTING *style*

A practical and timeless design can also be playful, colourful and full of surprises, as Jenna Botrie's family home perfectly illustrates

WORDS KAREN WILSON | **PHOTOGRAPHY** NIAMH BARRY



HOME TRUTHS

THE PROPERTY

Detached 1920s house

ROOMS Sitting room, dining room, kitchen, cloakroom, four bedrooms, four bathrooms, basement

LOCATION

Toronto, Canada

KITCHEN-DINER

'There is lots of secret storage under the banquette,' says Jenna. 'The gallery wall is a favourite of mine.' White large oval Chelsea dining table, Fusion Living, has this style. Try Penton dining chair, Loft. Banquette fabric, Maxwell Fabrics. Top left artwork by Moira Ness

KITCHEN

'I love the reeding on the side of the island and how that ties in with the reeded glass in the cabinetry beside the cooker hood,' says Jenna. Bridge faucet with sidespray in Gold, Roman Bath Centre. Faber Chloé cooker hood, Range Cookers, is an alternative



WHY DID YOU BUY THIS HOUSE?

The location and potential appealed to us and the home's character – combined with the neighbourhood – made it the right fit for our long-term family home. My husband and I bought it in 2018 and lived in it for four years before planning the renovation as our family grew. As the manager of business development and communications for interior design practice Dart Studio (founded by my sister, Olivia), we always knew we would use the firm for our project.

WHAT WAS YOUR BRIEF? To create a durable, practical and beautiful home for our family of five, with ample storage, natural light and flow. My style is timeless yet playful, and I love colour.

WAS MUCH BUILDING WORK REQUIRED? Yes – a two-storey rear addition, full basement renovation and a complete interior gut. The basement stairs were relocated to create a defined foyer and maximise functionality.

WHICH ROOM WAS THE MOST IMPORTANT? The kitchen and dining banquette as they function as the family hub. It's where meals, crafts and gatherings happen daily. I knew I wanted dark cabinets or green but about a month before install I started to panic, thinking I should go more neutral. I'd seen lots of other spaces being designed and questioned my choices. However, as soon as I saw the colour on-site, I loved it.

HOW DID YOU CHOOSE THE COLOUR PALETTE? It's grounded in rich,



DINING ROOM

Wainscoting gives the space a more traditional feel, but it's the contrasting whimsical wallpaper that is the showstopper.

'It makes the room feel fun and joyful,' says Jenna.

Hollyhocks wallpaper, House of Hackney. Wainscoting in Dovetail, Sherwin-Williams. Menlo Park chandelier, Union Lighting



SITTING ROOM

'We selected vintage pieces for longevity, such as a vintage coffee table, which blends seamlessly with new custom millwork, fabrics and lighting,' says Jenna.

Edge brass arch wall mirror, Crate&Barrel. Vintage coffee table, Guff Furniture. Try the Manston wall sconce, Dowsing & Reynolds

**'THE WALLPAPER IS BOLD, BUT
THE COLOURS ARE RICH AND
EARTHY SO THAT HELPS TIE IT IN
WITH THE MORE TRAD ELEMENTS'**



timeless hues such as green kitchen cabinetry and deep berry walls in the principal bedroom, paired with joyful hits of colour in wallpaper, tiles and fabrics. The palette mixes depth with playfulness to reflect the family's personality.

HOW DID YOU CREATE COHESION THROUGHOUT? A mix of bold moments (wallpaper, tiles, art) with timeless architectural details (wainscoting, peaked ceiling, classic cabinetry). The cohesion comes from balancing playful colour and pattern with grounding neutrals and traditional details.

WHAT WAS THE BIGGEST CHALLENGE? Balancing design decisions with the realities of a busy family lifestyle. For example,

swapping natural stone for porcelain counters for durability and peace of mind. We also had to create functional storage in a home that previously had none.

WHAT WAS THE MOST SATISFYING ASPECT OF THIS PROJECT? Seeing the transformation from a dated, dark house into a bright, highly functional home tailored perfectly to the needs of our growing family.

WHAT IS YOUR ADVICE FOR CREATING A SUCCESSFUL SCHEME?

Be realistic about how you live and choose materials accordingly. Storage is key, especially for families. Don't be afraid of colour or bold statements – they add character and personality – and always trust your original design instincts. 25

dartstudio.ca



MAIN BEDROOM

A 'cheated' ceiling line gives the appearance of symmetry under an off-centred roofline that spans over the en suite. 'It makes the room feel much larger and more open,' says Jenna. Wardrobes in Brinjal, Farrow & Ball. Grasscloth wallpaper, Phillip Jeffries. Metz bench in dark brown acacia, Swoon, would work here



MAIN EN SUITE

'This area flows beautifully off the bedroom,' says Jenna.

'It feels like a natural extension of the space.'

Eros mirrors, Renwil. Tabitha wall sconce, Mitzi, is similar. Rubinet Genesis cross wall-mount faucets in Gold, Roman Bath Centre. Large bubbly stoneware vase, H&M Home, is a similar alternative